

# Theme Park



twinkl

# Year 5/6 Project Pack: Theme Park

During this project, you will:

Develop your problem-solving and thinking skills.

Make decisions and choices.

Strengthen your ability to work collaboratively within a team.

Use a range of mathematical and literacy skills.

Have fun!

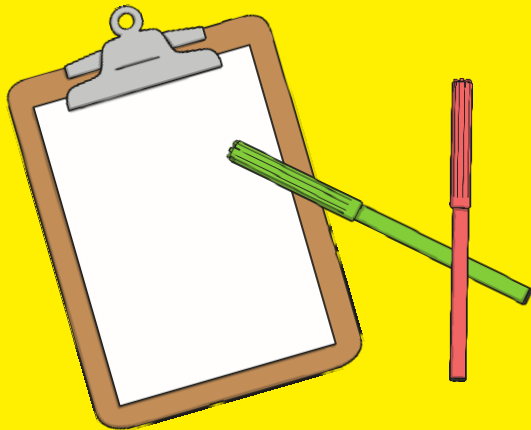




# Lesson 1: The Brief

You and your company have bought a plot of land behind New Swannington Primary School..

You have recently been granted planning and permission to build a theme park as the local council feel the attraction would bring income and jobs within the local area.



# Your Theme Park

The plot of land you are building on sits the other side of Spring Lane. The site measures approximately 500m by 300m.



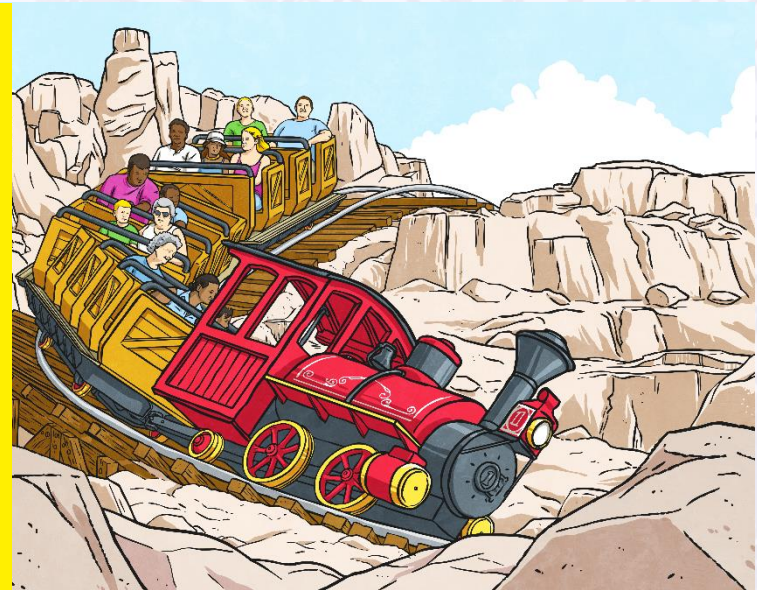


# Business Ideas:

## What Makes an Exciting Theme Park?

Think about some of the theme parks you have visited before or have heard about. What makes them good? If you visit a Theme Park, what do you want to be there? How do they make you feel?

<https://www.youtube.com/watch?v=LlO-LyXfCbI>



# Business Ideas:

## What are you going to call your theme park?

Your Theme Park needs a name, logo and slogan. Think about some of the ones we have in this country. Alton Towers, Thorpe Park, Drayton Manor etc. Don't worry yet about giving your park a theme.



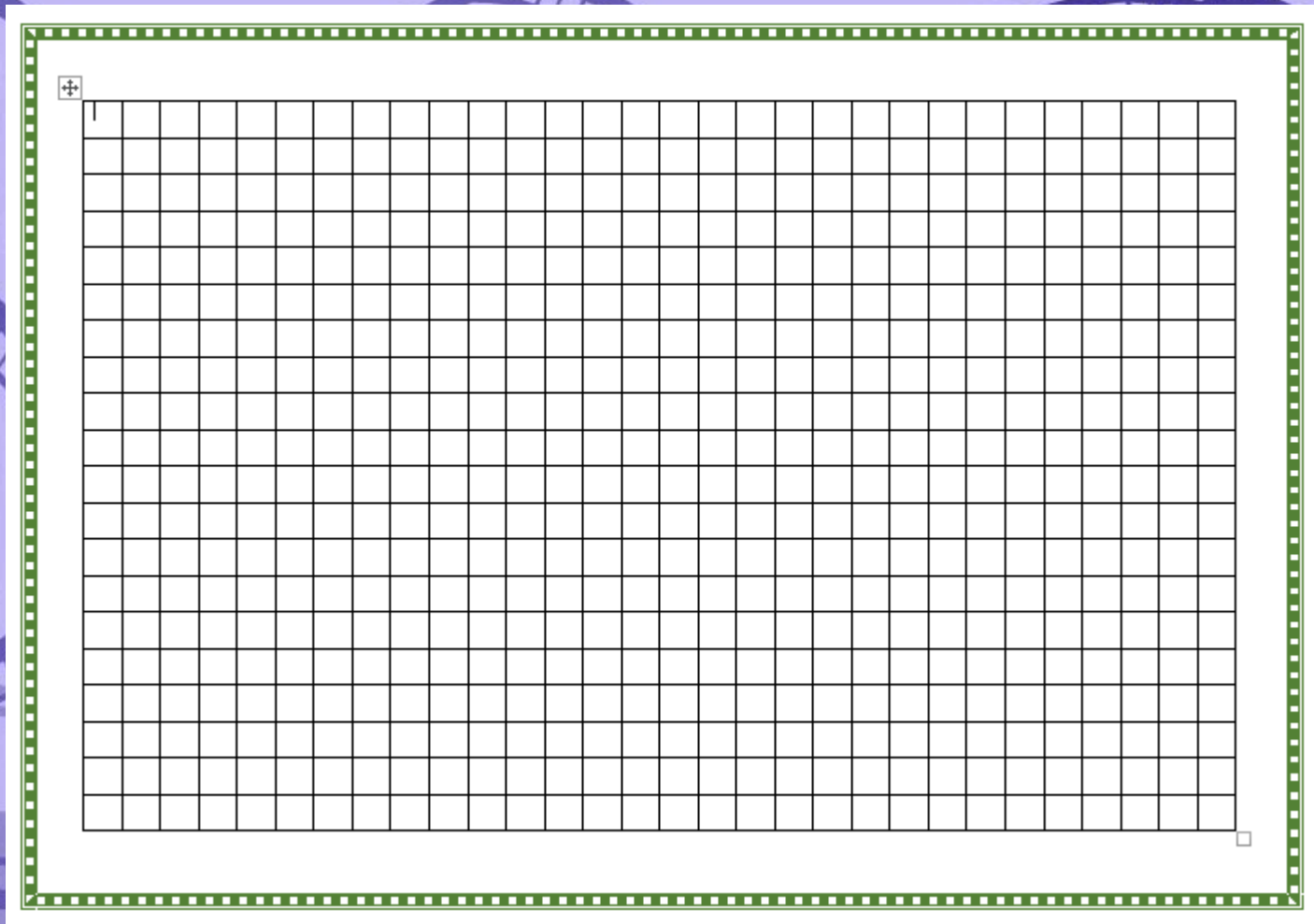


# Theme Park

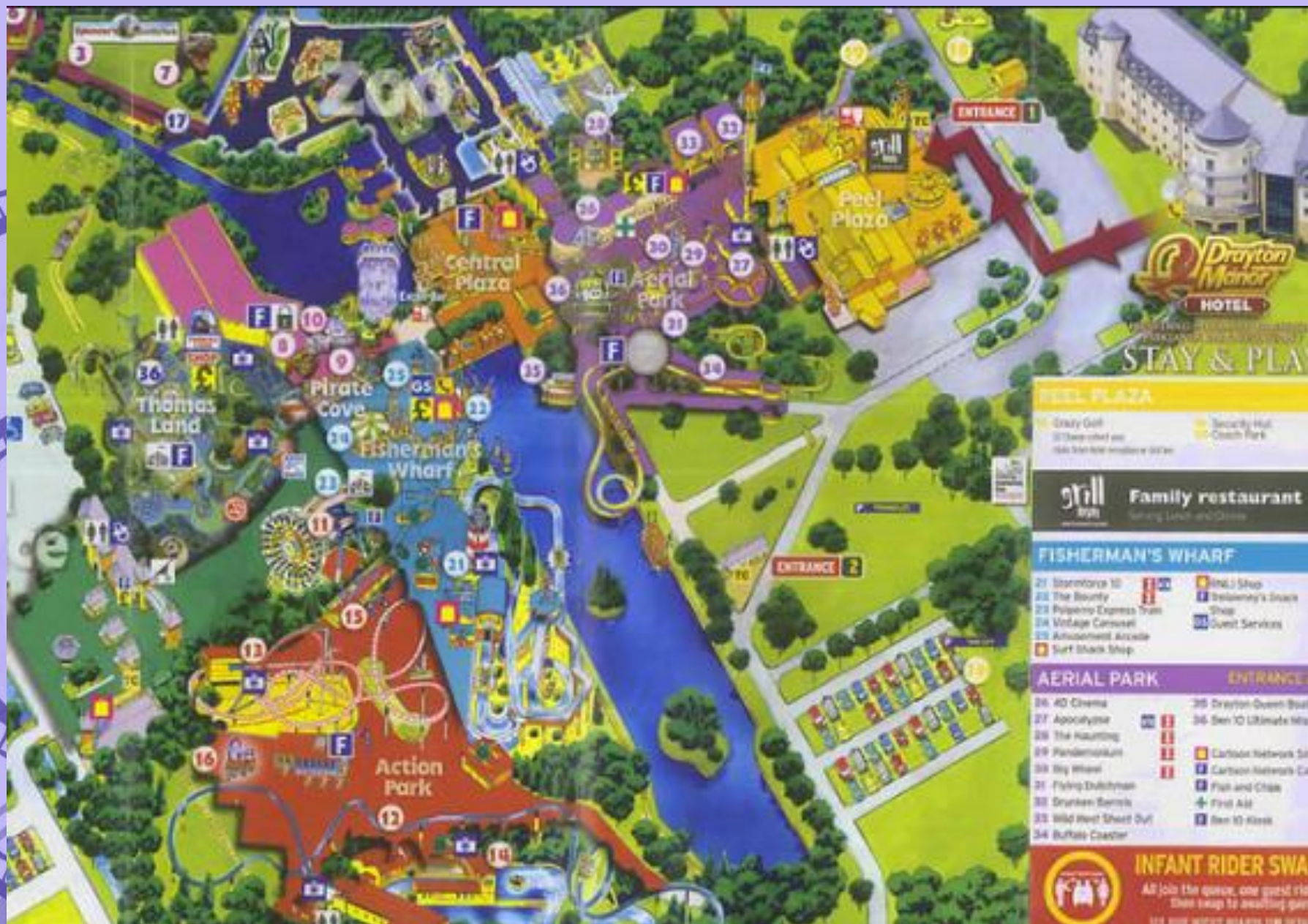


twinkl

This grid represents the site on which you are building your Theme Park. It measures approximately 500m by 300m. Each square is 15m by 15m. You are going to have three different areas in your park, each of which must have a distinct theme.













New for Summer 2013

# DINO STONE PARK

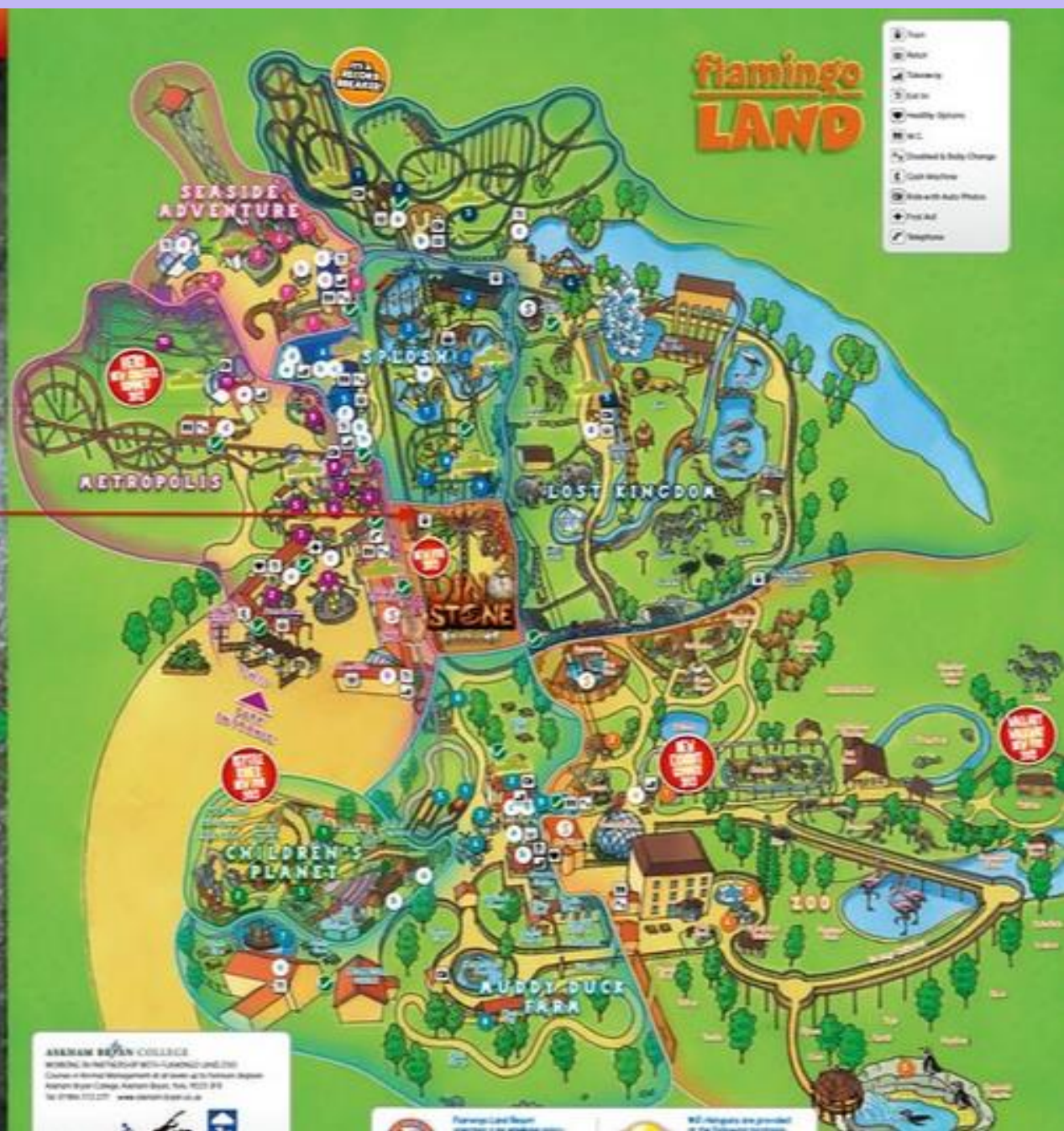


## Dino-Stone Park

1. Prehistoric
2. Cretaceous
3. Triassic
4. Dinosaur
5. Jurassic
6. Silurian
7. Devonian
8. Permian

Welcome to Flamingo Land's spectacular new attraction, Dino-Stone Park. Providing a sensational experience for all ages to enjoy, this is your opportunity to enjoy the thrill of a world lost in the mists of time.

With two fantastic new rides, Cyclone and Twister, opening during the 2013 season, plus our 'Living' Dinosaur Zoo and life-size skeleton collection, we're sure you'll be amazed. What's more, some visitors can set out on a Dino Dig food hunt or 'hatch' a unique prehistoric photo opportunity.



ARKHAM BRYAN COLLEGE  
WORKING IN THE NIGHT OF THE LIVING DEAD  
Cretaceous Dinosaur Theme Park is open to the public  
Arkham Bryan College, Arnhem, Devon, UK, NN20 8J  
Tel: 01884 712 277 www.arkhambryan.co.uk







# Discussing Business Ideas: Park Layout

Your theme park will need to have **three** separate and distinct areas.

Maybe you'll have an area relating to a country, a space themed area (Comet Cove), a magical kingdom (Fairydust Castle) or a haunted region (Do You Dare?) .

Or maybe the areas will be themed by the rides within them e.g. a thrill-seekers area full of rides for daredevils (Adrenalin Rush), a water world with only water rides where you'll receive a soaking (Splash Lagoon), a children's world for under 8s only (Ride n Play) etc.



# Discussing Business Ideas: Park Layout

Blast Off!! Or Mermaid Cove?.

Think of the the three different themes you want your areas to have. These could be closely related (all to do with space) or they could be completely different. Come up with the name, tag line and logo for each of your three areas.





