

# Spot the pattern – making it explicit

**1** Complete the number sentences.

Use the place value chart to help you.

H	T	O

- a)  $222 + 6 =$
- b)  $222 + 60 =$
- c)  $222 + 600 =$

What do you notice?



**2** Complete the number sentences.

Use the place value chart to help you.

H	T	O

- a)  $777 - 400 =$
- b)  $777 - 40 =$
- c)  $777 - 4 =$

What do you notice?



**3** Complete the number sentences.

- a)  $315 + 200 =$
- $315 + 20 =$
- $315 + 2 =$
- b)  $748 - 200 =$
- $748 - 20 =$
- $748 - 2 =$
- c)  $405 + 30 =$
- $405 + 50 =$
- $405 + 90 =$
- d)  $635 - 300 =$
- $635 - 500 =$
- $635 - 600 =$

**4** Amir makes this number on a place value chart.

H	T	O

a) Amir adds some counters to the chart.

He now has the number 736

What counters did Amir add?

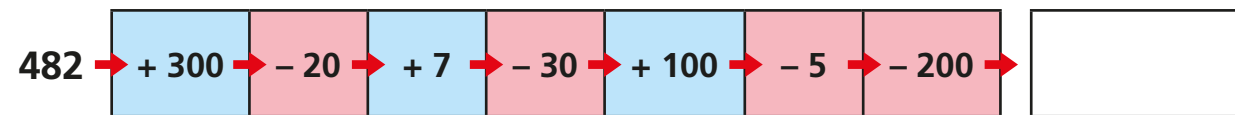
\_\_\_\_\_

b) Amir removes 3 counters from one of the columns.

What numbers could he have now?

\_\_\_\_\_

5 Work out the missing number.



6 Complete the sentences.

a) 500 more than 238 is equal to

b) 528 is  more than 228

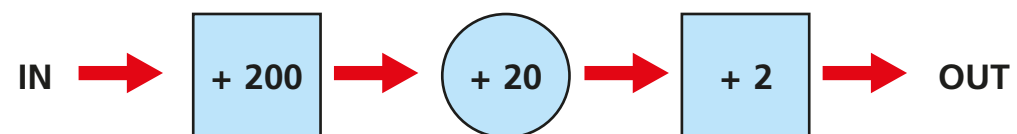
c) 727 is  less than 729

d) 64 is  less than 364

e) 429 is 20 more than

f) 429 is 20 less than

7 Here is a number machine.



a) If 476 goes into the machine, what number comes out?

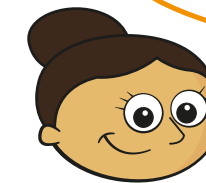
b) If 476 comes out of the machine, what number went in?

How did you work this out?

---

---

8



When you add 3 tens to a number, the only column that changes is the tens column.

Is Dora correct? \_\_\_\_\_

Explain your answer.

---

---